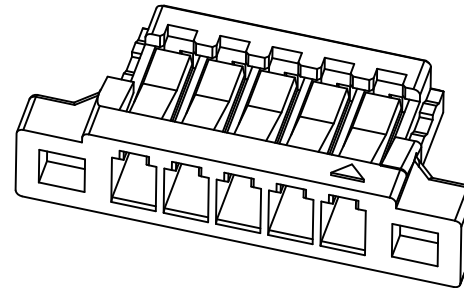
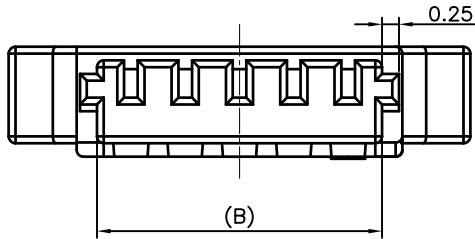


**RoHS**  
COMPLIANT



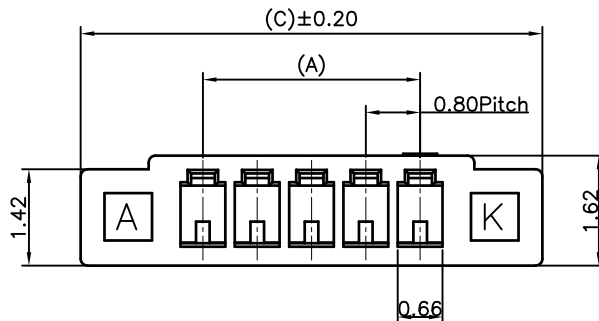
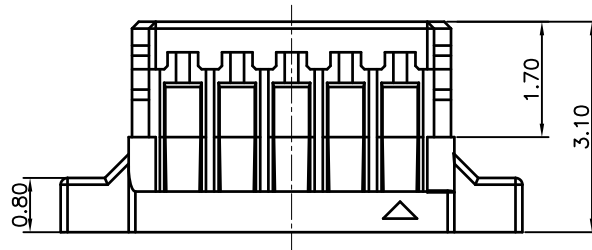
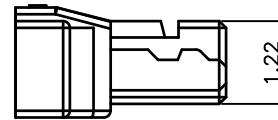
◆ SPECIFICATIONS

- Current rating: 0.5A AC, DC
- Voltage rating: 30V AC, DC
- Temperature range: -40°C ~ +105°C
- Insulation resistance: 100MΩ Min.
- Withstanding voltage: 200V AC/ minute.
- Contact resistance: 20mΩ Max.

Material:

Insulator: PPA UL94 V-0  
Suitable E0802 series terminal  
Mate with E0802 series wafer

3D View



Ordering code:

E0802H00-NP X- T -XX  
① ② ③ ④

- ① No. of Circuits
- ② X : Product color(A--Y)  
A : Black type  
None : White
- ③ T : HSG with Ear  
None : None
- ④ HF : Halogen Free  
None : ROHS

| Dimensions |       |       |       |
|------------|-------|-------|-------|
| Pin        | A     | B     | C     |
| 2P         | 0.80  | 1.80  | 4.40  |
| 3P         | 1.60  | 2.60  | 5.20  |
| 4P         | 2.40  | 3.40  | 6.00  |
| 5P         | 3.20  | 4.20  | 6.80  |
| 6P         | 4.00  | 5.00  | 7.60  |
| 7P         | 4.80  | 5.80  | 8.40  |
| 8P         | 5.60  | 6.60  | 9.20  |
| 9P         | 6.40  | 7.40  | 10.00 |
| 10P        | 7.20  | 8.20  | 10.80 |
| 11P        | 8.00  | 9.00  | 11.60 |
| 12P        | 8.80  | 9.80  | 12.40 |
| 13P        | 9.60  | 10.60 | 13.20 |
| 14P        | 10.40 | 11.40 | 14.00 |
| 15P        | 11.20 | 12.20 | 14.80 |
| 16P        | 12.00 | 13.00 | 15.60 |
| 17P        | 12.80 | 13.80 | 16.40 |
| 18P        | 13.60 | 14.60 | 17.20 |
| 19P        | 14.40 | 15.40 | 18.00 |
| 20P        | 15.20 | 16.20 | 18.80 |



MARK

REVISION DESCRIPTION

SIGNATURE

DATE

TOLERANCE  
X.X ±0.30  
X.XX ±0.20  
X.XXX ±0.10  
Angle ±2°

TITLE:  
0.8mm Crimp Housing

UNIT:mm

SCALE:N/A

DRAWN: 2020.01.10

CHECKED:

APPROVED:

SHEET:1/1

PROJECTION

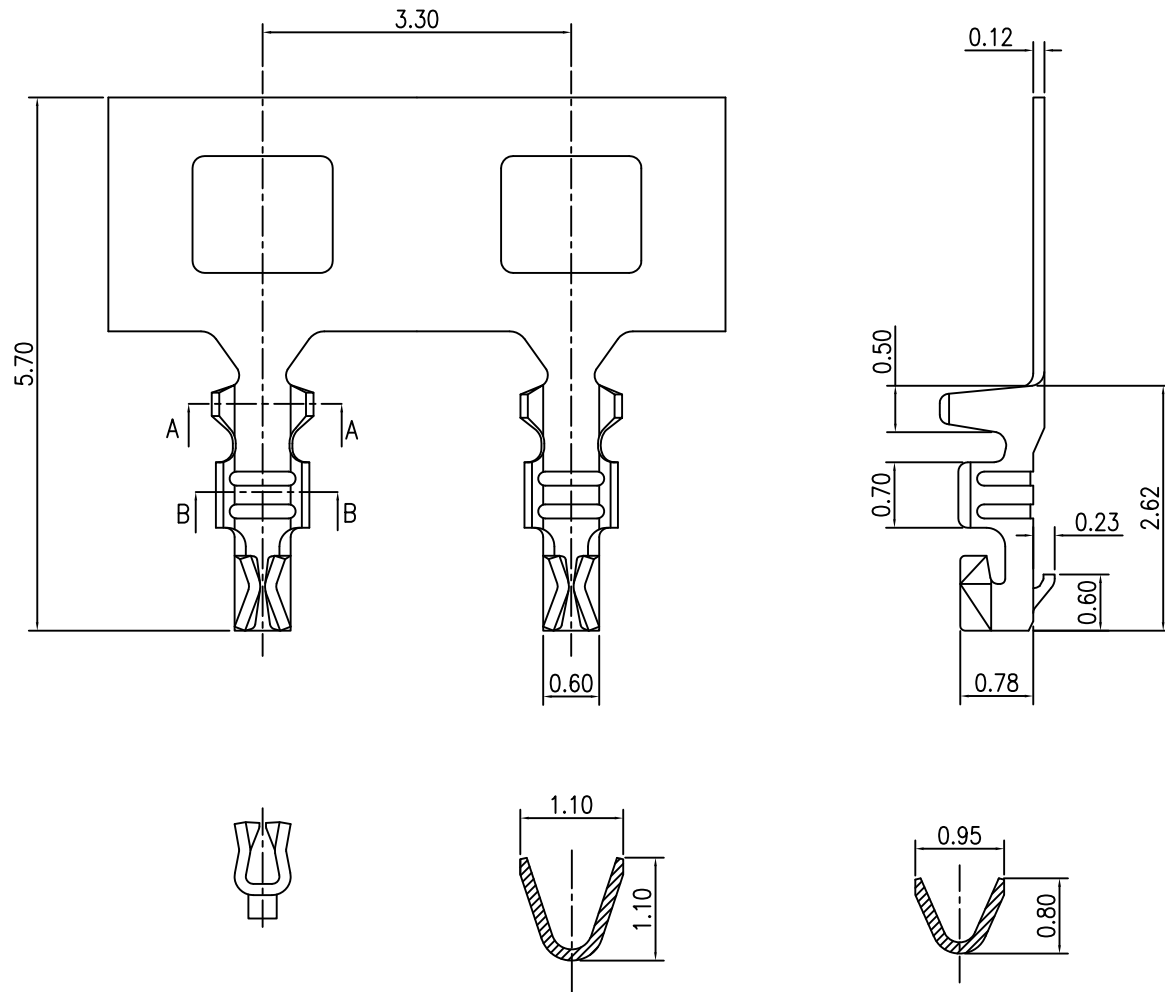
东莞市宏欣蓝电子有限公司

PART NO.: E0802H00-NPX-T-XX

REV.:A1

DRAWING NO.:E0802H00-NPX-T-XX

**RoHS**  
COMPLIANT



◆ SPECIFICATIONS

- Current rating: 0.5A AC, DC
- Voltage rating: 30V AC, DC
- Temperature range: -40°C ~ +105°C
- Insulation resistance: 100MΩ Min.
- Withstanding voltage: 200V AC/ minute.
- Contact resistance: 20mΩ Max.

Applicable Wires:

AWG#32

Insulation O.D. : 0.60mm MAX

Material: Phosphor Bronze

Plating: Tin plated over nickel

Suitable: E0802 series Crimp Housing

Q'TY/Reel: 30,000PCS

Note: E0802TOP-XX-XX

空码: Mark  
NK: NO Mark

Finish

|                |          |          |
|----------------|----------|----------|
| 5A--Gold-flash | 5B--2u"  | 5C--3u"  |
| 5D--4u"        | 5E--5u"  | 5F--10u" |
| 5G--15u"       | 5H--30u" | 5I--50u" |
| 2E--Tin-plated |          |          |

SECTION:A-A

SECTION:B-B



MARK

REVISION DESCRIPTION

SIGNATURE

DATE

TOLERANCE

X.X ±0.30

X.XX ±0.20

X.XXX ±0.10

Angle ±2°

TITLE:

0.8mm Crimp  
Terminal

DRAWN: 2020.01.10

CHECKED:

APPROVED:

UNIT:mm

SCALE:N/A

SHEET:1/1

PROJECTION

REV.:A1

DRAWING NO.: E0802TOP

东莞市宏欣蓝电子有限公司

PART NO.: E0802TOP-XX-XX

1

2

3

4

5

6

7

8

9

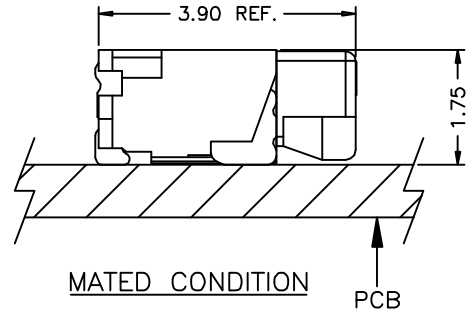
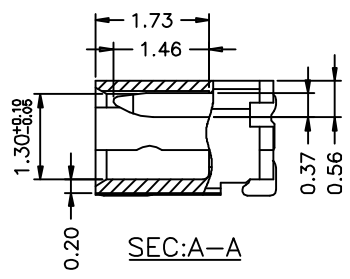
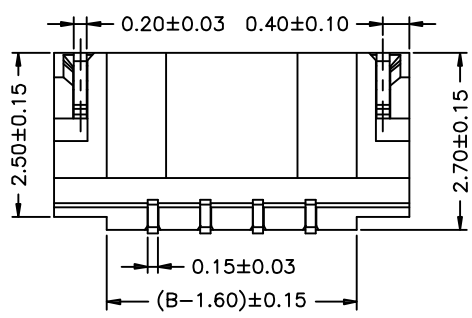
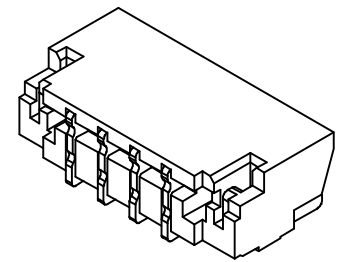
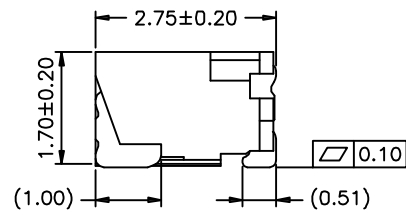
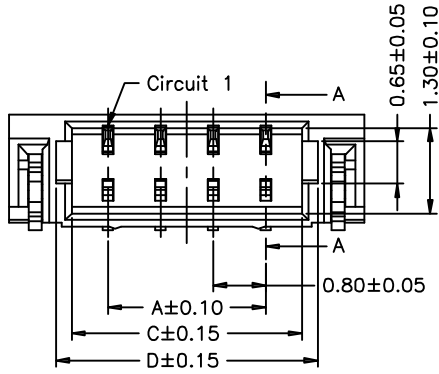
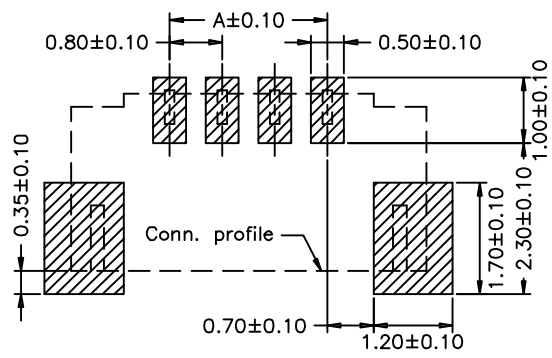
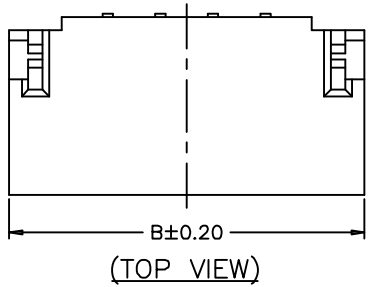
1 2 3 4 5 6 7 8 9

A  
B  
C  
D  
E  
F

A  
B  
C  
D  
E  
F

**Specifications :**  
 Voltage rating: 30V AC / DC  
 Current rating: 0.5A AC / DC  
 Withstanding voltage: 200V AC/minute  
 Temperature range: -25°C~+85°C  
 Insulation resistance:100MΩ Min  
 Contact resistance: 20mΩ Max

**Material :**  
 Insulator: LCP UL 94V-0  
 Contact: Phosphor bronze  
 Fitting Nail: Phosphor bronze  
 Plating: Gold flash or Matte Tin plated over 50u" Nickel  
 Color: Natural(Beige)  
 Suitable: E0801 Series Single Row Housing  
 or E0802 Series Crimp Housing



| Circuit No. | Dimensions |       |       |       |
|-------------|------------|-------|-------|-------|
|             | A          | B     | C     | D     |
| 02P         | 0.80       | 3.80  | 1.90  | 2.38  |
| 03P         | 1.60       | 4.60  | 2.70  | 3.18  |
| 04P         | 2.40       | 5.40  | 3.50  | 3.98  |
| 05P         | 3.20       | 6.20  | 4.30  | 4.78  |
| 06P         | 4.00       | 7.00  | 5.10  | 5.58  |
| 07P         | 4.80       | 7.80  | 5.90  | 6.38  |
| 08P         | 5.60       | 8.60  | 6.70  | 7.18  |
| 10P         | 7.20       | 10.20 | 8.30  | 8.78  |
| 12P         | 8.80       | 11.80 | 9.90  | 10.38 |
| 14P         | 10.40      | 13.40 | 11.50 | 11.98 |
| 15P         | 11.20      | 14.20 | 12.30 | 12.78 |
| 16P         | 12.00      | 15.00 | 13.10 | 13.58 |
| 17P         | 12.80      | 15.80 | 13.90 | 14.38 |
| 20P         | 15.20      | 18.20 | 16.30 | 16.78 |

|     |      |      |                |
|-----|------|------|----------------|
| ④   |      |      |                |
| ③   |      |      |                |
| ②   |      |      |                |
| ①   |      |      |                |
| LTR | NAME | DATE | VERSION RECORD |
| 1   | 2    | 3    |                |

|                   |       |            |            |
|-------------------|-------|------------|------------|
| GENERAL TOLERANCE |       | UNIT: mm   | DATE       |
| .X±0.30           | X°±1° | DRAWN: 张自豪 | 2017.09.21 |
| .XX±0.20          | .X°±  | CHECKED:   |            |
| .XXX±0.10         | .XX°± | APPROVED:  |            |

|  |        |     |
|--|--------|-----|
| TITLE:<br>JST SUR 0.8 SMT<br>90° Wafer |        |     |
| VER.                                   | SCALE: | N/A |
| A1                                     | SHEET: | 1/1 |

**东莞市宏欣蓝电子有限公司**

|             |          |               |
|-------------|----------|---------------|
| PROJECT     | PART NO. | E0801W90-NP-S |
| DRAWING NO. |          | E0801W90      |

1 2 3 4 5 6 7 8 9