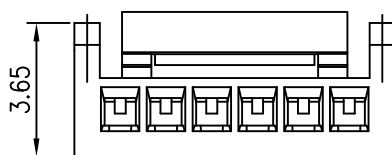
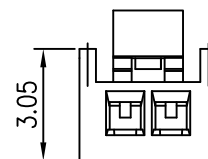


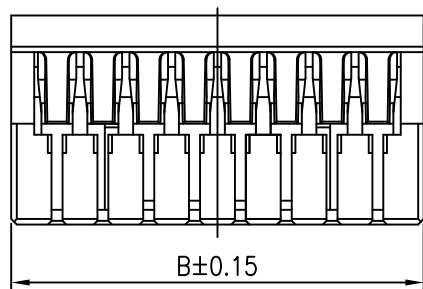
7~15P



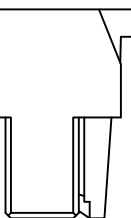
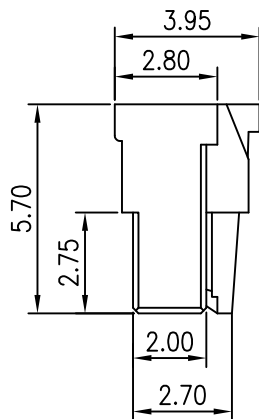
5~6P



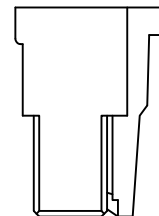
2~4P



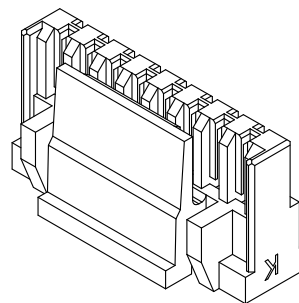
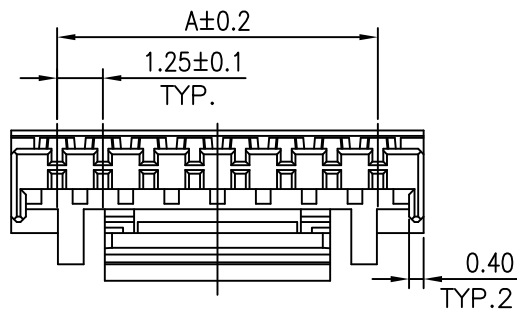
B±0.15



5~6P



2~4P



**SPECIFICATIONS**

Current rating: 1A AC, DC  
 Voltage rating: 150V AC, DC  
 Temperature range: -25°C ~ +85°C  
 Insulation resistance: 100MΩ/ min.  
 Withstanding voltage: 500V AC/ minute.  
 Contact resistance: 30mΩ/ max.

Material: Nylon66 UL94 V-0

Ordering code:

E1257H00-NP- L - HF  
 ① ②

① L: Locking

② HF=Halogen Free

Circuits	Dimensions		
	A	B	C
02	1.25	3.85	1.90
03	2.50	5.10	2.90
04	3.75	6.35	4.15
05	5.00	7.50	4.15
06	6.25	8.75	6.15
07	7.50	10.00	6.15
08	8.75	11.25	6.15
09	10.00	12.50	6.15
10	11.25	13.75	8.10
11	12.50	15.00	8.10
12	13.75	16.25	8.10
13	15.00	17.50	8.10
14	16.25	18.75	8.10
15	17.50	20.00	8.10

④				GENERAL TOLERANCE	UNIT: mm	DATE	TITLE: JST GH 1.25mm Crimp Housing			
③				.X ± 0.25	X° ± 1°	DRAWN: 张自豪				2017.09.28
②				.XX ± 0.15	.X° ±	CHECKED:		VER.	SCALE:	N/A
①				.XXX ± 0.08	.XX° ±	APPROVED:		A1	SHEET:	1/1
LTR	NAME	DATE	VERSION RECORD							

东莞市宏欣蓝电子有限公司

PROJECT PART NO. E1257H00-NP-L-HF

DRAWING NO. E1257H00-NP-L-HF

1 2 3 4 5 6 7 8 9

A

A

B

B

C

C

D

D

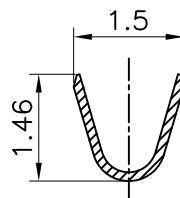
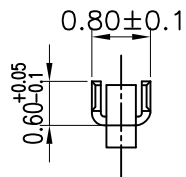
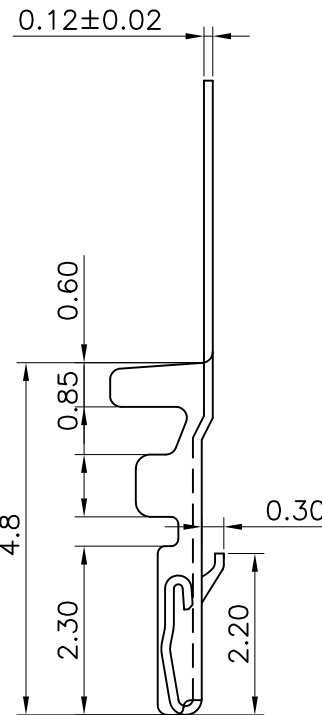
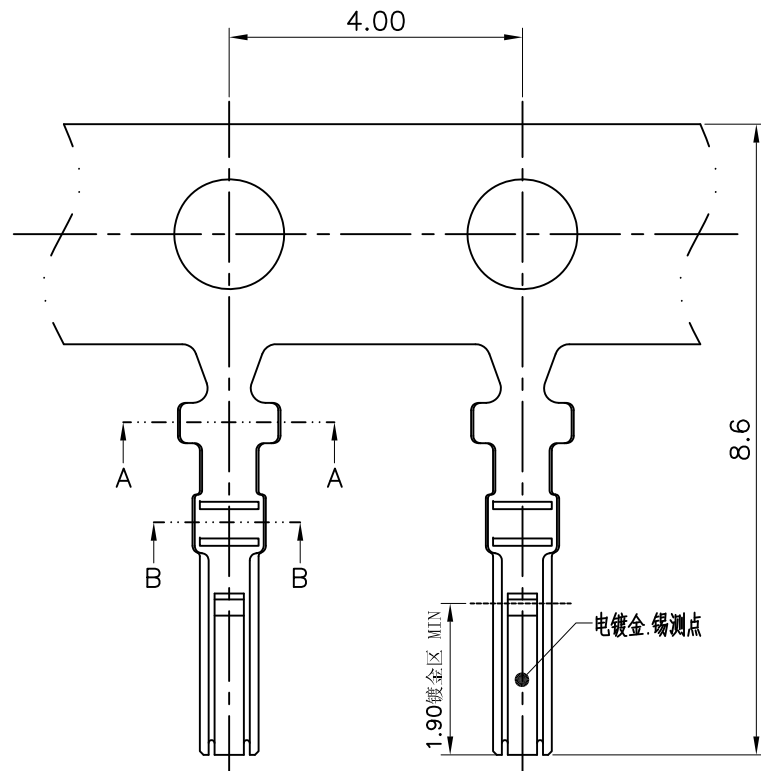
E

E

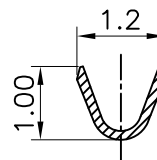
F

F

1 2 3 4 5 6 7 8 9



SECTION:A-A



SECTION:B-B

**SPECIFICATIONS**

Current rating: 1A AC, DC  
 Voltage rating: 150V AC,DC  
 Temperature range: -25°C ~ +85°C  
 Insulation resistance: 100MΩ/ min.  
 Withstanding voltage: 500V AC/ minute.  
 Contact resistance: 30mΩ/ max.

Material: Phosphor Bronze

Applicable wires:

Conductor size: AWG#26~#32

Insulation O.D. : 1.0mm Max.

Finish: Tin plated or Gold plated contact area

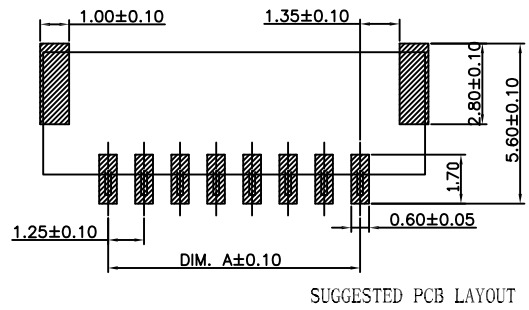
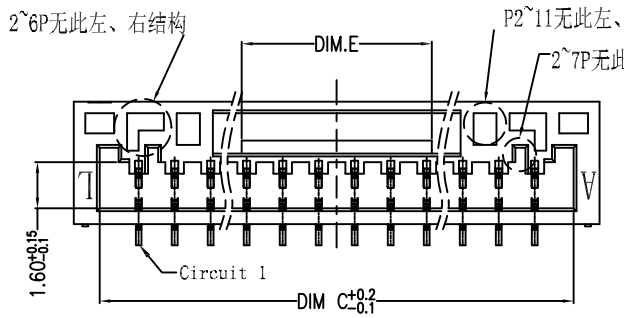
Q'TY/Reel: 20,000PCS

④			
③			
②			
①			
LTR	NAME	DATE	VERSION RECORD

GENERAL TOLERANCE		UNIT: mm		DATE	
.X ± 0.20	X° ± 1°	DRAWN:	张自豪	2017.09.28	
.XX ± 0.15	.X° ±	CHECKED:			
.XXX ± 0.08	.XX° ±	APPROVED:			

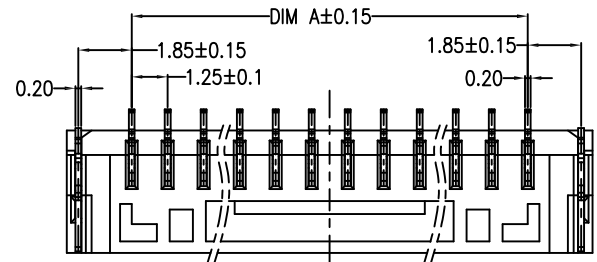
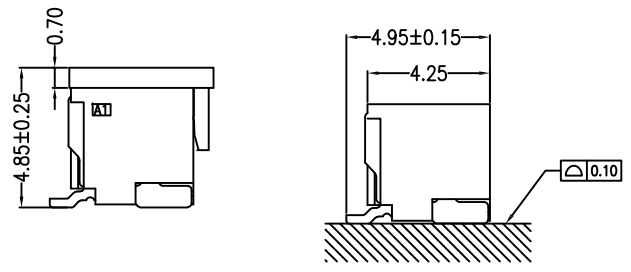
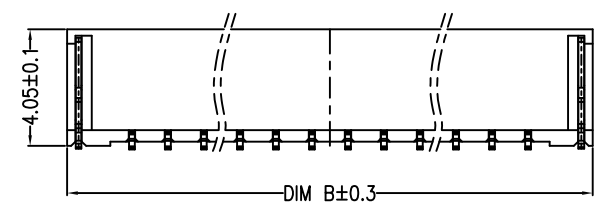
TITLE:		
JST GHR 1.25 Crimp Terminal		
VER.	SCALE:	N/A
A1	SHEET:	1/1

东莞市宏欣蓝电子有限公司		
PROJECTION	PART NO.	E1257TOP-2E
	DRAWING NO.	E1257TOP



**SPECIFICATIONS**  
 Current rating: 1A AC, DC  
 Voltage rating: 150V AC, DC  
 Temperature range: -25°C ~ +85°C  
 Insulation resistance: 100MΩ/ min.  
 Withstanding voltage: 500V AC/ minute.  
 Contact resistance: 30mΩ/ max.

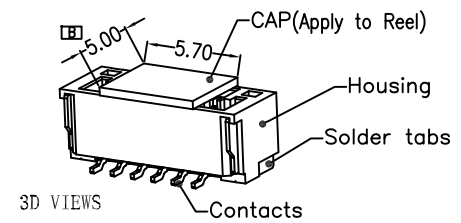
**Material:**  
 Insulator: LCP UL94V-0  
 Contact: Phosphor Bronze  
 Finish: Tin plated



Ordering code:

E1257W00-NP-S X X X XX -L  
 ①②③④⑤

- ① N=Halogen Free R=RoHS
- ② Material: 6=Nylon 6T L=LCP
- ③ Color: B=Black E=Beige
- ④ Plating code: T1=Tin plated  
G1=Gold-flash
- ⑤ L: Locking

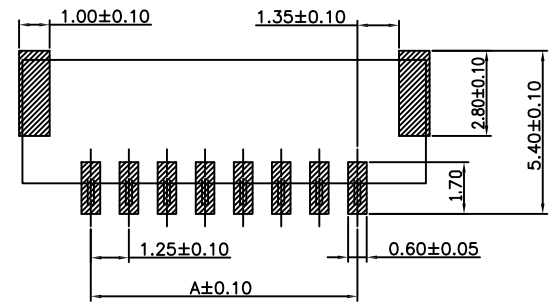
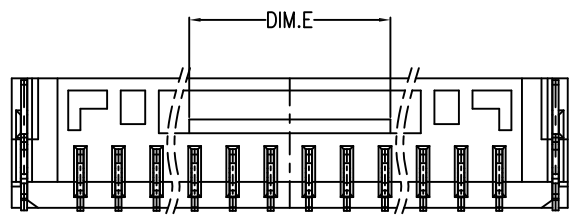


尺寸	DIM A	DIM B	DIM C	DIM E
2P	1.25	5.75	3.75	0.75
3P	2.50	7.00	5.00	1.60
4P	3.75	8.25	6.25	2.65
5P	5.00	9.50	7.50	2.50
6P	6.25	10.75	8.75	4.65
7P	7.50	12.00	10.00	4.65
8P	8.75	13.25	11.25	4.65
9P	10.00	14.50	12.50	4.65
10P	11.25	15.75	13.75	6.60
11P	12.50	17.00	15.00	6.60
12P	13.75	18.25	16.25	6.60
13P	15.00	19.50	17.50	6.60
14P	16.25	20.75	18.75	6.60
15P	17.50	22.00	20.00	6.60

F	④			GENERAL TOLERANCE		UNIT: mm	DATE	TITLE: JST GHR 1.25 SMT 180° Wafer			东莞市宏欣蓝电子有限公司			
	③			.X ± 0.30	X° ± 5°	DRAWN: 张自豪	2017.09.28							VER. SCALE: N/A A SHEET: 1/1
	②			.XX ± 0.25	.X° ± 2°	CHECKED:		PROJECT	PART NO.	E1257W00-NP-SXXXXX-L				
	①			.XXX ± 0.10	.XX° ± 1°	APPROVED:		DRAWING NO.	E11257W00					
	LTR	NAME	DATE	VERSION RECORD										
	1	2	3	4	5	6	7	8	9					

1 2 3 4 5 6 7 8 9

A



SUGGESTED PCB LAYOUT  
(COMPONENT SIDE)

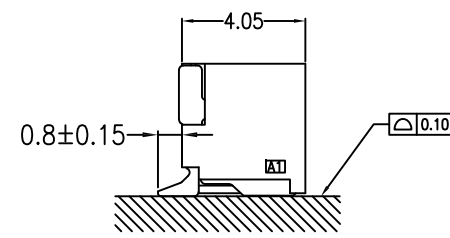
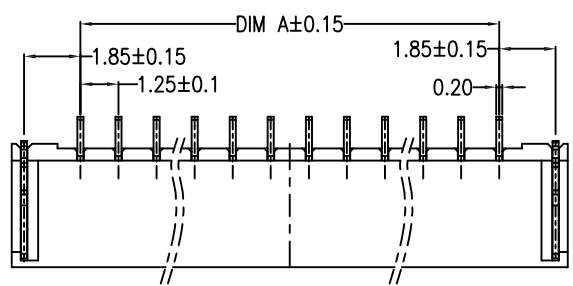
**SPECIFICATIONS**  
 Current rating: 1A AC, DC  
 Voltage rating: 150V AC, DC  
 Temperature range: -25°C ~ +85°C  
 Insulation resistance: 100MΩ/ min.  
 Withstanding voltage: 500V AC/ minute.  
 Contact resistance: 30mΩ/ max.

**Material:**  
 Insulator: LCP UL94V-0  
 Contact: Phosphor Bronze  
 Finish: Tin plated

B

A

C



B

C

D

Ordering code:

E1257W90-NP-S X X X XX -L  
 ①②③④⑤

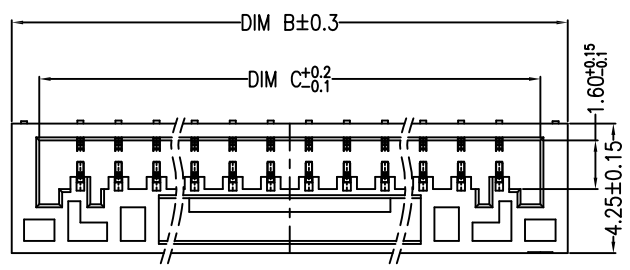
- ① N=Halogen Free R=RoHS
- ② Material: 6=Nylon 6T L=LCP
- ③ Color: B=Black E=Beige
- ④ Plating code: T1=Tin plated  
G1=Gold-flash
- ⑤ L: Locking

孔位	DIM A	DIM B	DIM C	DIM E
2P	1.25	5.75	3.75	0.75
3P	2.50	7.00	5.00	1.60
4P	3.75	8.25	6.25	2.65
5P	5.00	9.50	7.50	2.50
6P	6.25	10.75	8.75	4.65
7P	7.50	12.00	10.00	4.65
8P	8.75	13.25	11.25	4.65
9P	10.00	14.50	12.50	4.65
10P	11.25	15.75	13.75	6.60
11P	12.50	17.00	15.00	6.60
12P	13.75	18.25	16.25	6.60
13P	15.00	19.50	17.50	6.60
14P	16.25	20.75	18.75	6.60
15P	17.50	22.00	20.00	6.60

D

D

E



E

F

④				GENERAL TOLERANCE	UNIT: mm	DATE	TITLE:		
③				.X ± 0.30	X° ± 5°	DRAWN: 张自豪	JST GHR 1.25 SMT		
②				.XX ± 0.25	.X° ± 2°	CHECKED:	90° Wafer		
①				.XXX ± 0.10	.XX° ± 1°	APPROVED:	VER.	SCALE:	N/A
LTR	NAME	DATE	VERSION RECORD				A	SHEET:	1/1

东莞市宏欣蓝电子有限公司

PROJECT PART NO. E1257W90-NP-SXXXXX-L

DRAWING NO. E11257W90

1 2 3 4 5 6 7 8 9