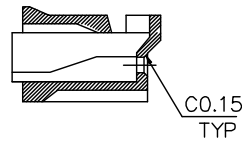
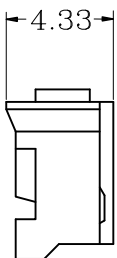
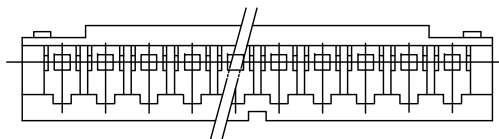


A

A



SEC:A-A

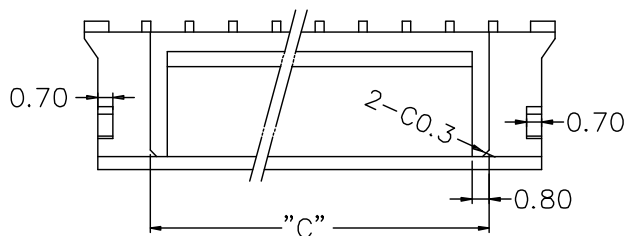
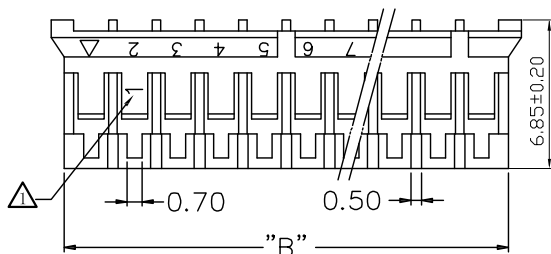
■ Specifications(规格):

- Voltage rating(额定电压): 100V AC / DC
- Current rating(额定电流): 2A AC / DC
- Withstanding voltage(耐压值): 800V AC/minute
- Temperature range(工作温度): -25°C~+85°C
- Insulation resistance(绝缘电阻): ≥1000MΩ
- Contact resistance(接触电阻): ≤10mΩ
- After environmental testing(环境测试后): ≤20mΩ
- Suitable: E2001 Seria Terminal
- Material: PA66 UL94V-0

△ "CAVITY NO." TEXT 1.0,RISED 0.05

B

B

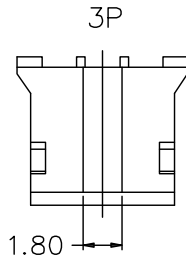
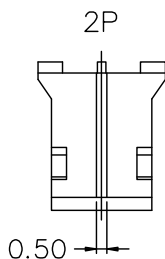
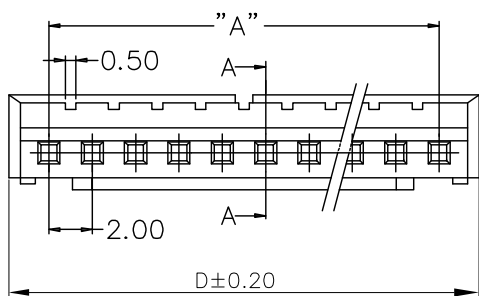


由 Autodesk 教育版产品制作

由 Autodesk 教育版产品制作

F

F



Ordering code:

E2001H00-NP X-X-XX-NK  
① ② ③ ④ ⑤

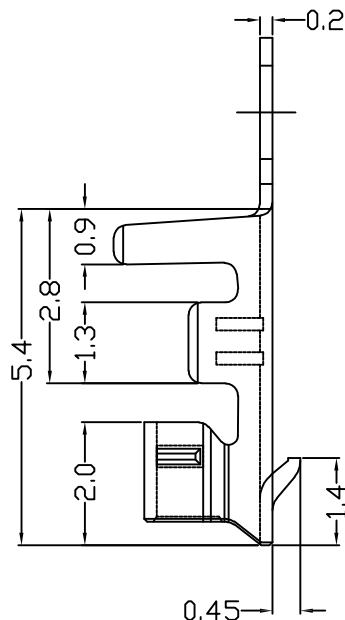
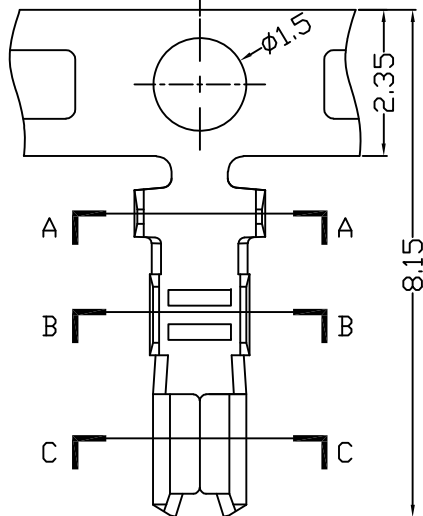
- ① No. of Circuits
- ② X : Product color(A--Y)  
A : Black type  
Blank : Natural type
- ③ Z : 灼热丝750度
- ④ HF : Halogen Free  
Blank : ROHS
- ⑤ NK : No Mark  
Blank : Mark

CTK	DIMENSIONS			
	A	B	C	D
2	2.00	4.50	—	5.79
3	4.00	6.50	—	7.79
4	6.00	8.50	3.60	9.79
5	8.00	10.50	5.60	11.79
6	10.00	12.50	7.60	13.79
7	12.00	14.50	9.60	15.79
8	14.00	16.50	11.60	17.79
9	16.00	18.50	13.60	19.79
10	18.00	20.50	15.60	21.79
11	20.00	22.50	17.60	23.79
12	22.00	24.50	19.60	25.79
13	24.00	26.50	21.60	27.79
14	26.00	28.50	23.60	29.79
15	28.00	30.50	25.60	31.79
16	30.00	32.50	27.60	33.79

				GENERAL TOLERANCE		UNIT: mm		DATE		TITLE:	
				.X±0.20		X°±1°		2013.03.16		JST PH2.0 mm Housing	
				.XX±0.10		.X°±		DRAWN: 张自豪		PROJECT	
				.XXX±0.05		.XX°±		CHECKED:		PART NO. E2001H00-NPX-X-XX-XX	
LTR NAME DATE VERISION RECORD				APPROVED:				VER. SCALE: N/A		DRAWING NO. E2001H	
A1		SHEET: 1/1									

东莞市宏欣蓝电子有限公司

PITCH=6.0

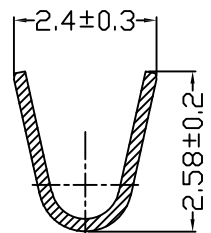


■ Specifications :

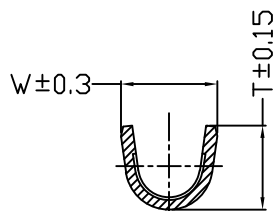
- Voltage rating: 100V AC / DC
- Current rating: 2A AC / DC
- Withstanding voltage: 800V AC/minute
- Temperature range: -25°C~+85°C
- Insulation resistance: ≥1000MΩ
- Contact resistance: ≤10mΩ
- After environmental testing: ≤20mΩ

E2001 I 0 P-XX-XX  
① ②③④⑤ ⑥

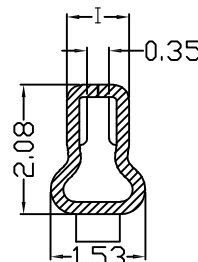
- ① Series No.
- ② T: Terminal
- ③ 9 : Side Contact  
0 : Up Contact
- ④ P : Phosphor Bronze
- ⑤ 2E : Tin-plated 先冲后镀  
0A : Gold Flash 镀半金  
5A : Gold Flash 镀全金
- ⑥ NK : No Mark  
Blank : Mark



SECTION A-A



SECTION B-B



SECTION C-C

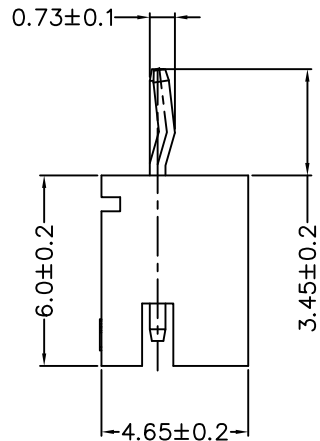
Specifications & Ordering Information:

Part No.	Wire Range	Insulation O.D	Material	Finish	Qty/Reel	DIM"W"	DIM"T"
E2001TOP-2E-NK	AWG #24~28	1.60(Max)	Phosphor Bronze	Tin-plated	10000PCS	1.65mm	1.38mm
E2001TOP-2E-G-NK	AWG #22	1.60(Max)	Phosphor Bronze	Tin-plated	10000PCS	1.75mm	1.68mm

				GENERAL TOLERANCE		UNIT: mm		DATE		TITLE: JST PH2.00mm Terminal			东莞市宏欣蓝电子有限公司						
				.X ± 0.30	X° ±	DRAWN: 张自豪		2015.09.28											
				.XX ± 0.20	.X° ±	CHECKED:				VER.		SCALE: N/A		PROJECT		PART NO.		E2001TOP-XX-XX	
LTR NAME DATE VERISION RECORD				.XXX ± 0.10	.XX° ±	APPROVED:				A1		SHEET: 1/1		DRAWING NO.		E2001T			

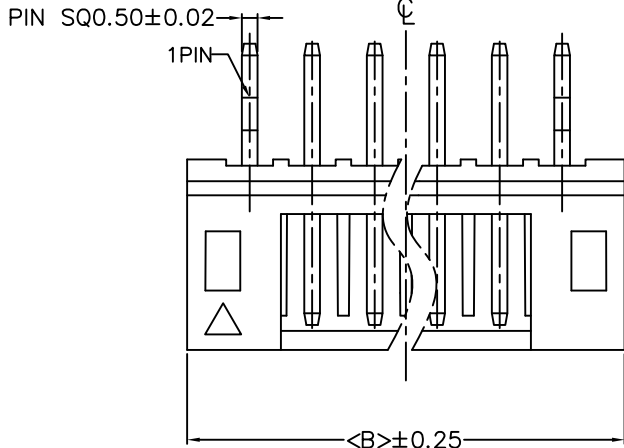
2 PIN 以上图示

2 PIN 图示

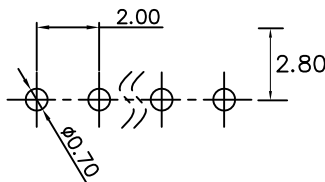
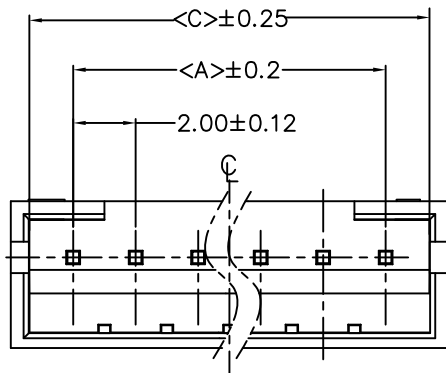


SPECIFICATIONS

- 1) MATERIAL:  
HOUSING: PA66 UL94V0  
TERMINAL: BRASS, TIN PLATING
- 3) Current rating: 2A AC, DC.
- 2) VOLTAGE RATING: 250V AC/DC
- 4) CONTACT RESISTANCE: 20mΩ MAX
- 5) INSULATION RESISTANCE: 1,000M OHMS MIN.
- 6) TEMPERATURE RANGE: -25~+85°.



0.80



Recommended P.C.B Layout (Top Side)  
(Tolerance=±0.05)

Poles	Part No.	Dimensions			Pcs/Bag
		A	B	C	
2	E2001W00-2P-HF	2.00	6.00	4.95	1000
3	E2001W00-3P-HF	4.00	8.00	6.95	1000
4	E2001W00-4P-HF	6.00	10.00	8.95	1000
5	E2001W00-5P-HF	8.00	12.00	10.95	1000
6	E2001W00-6P-HF	10.00	14.00	12.95	1000
7	E2001W00-7P-HF	12.00	16.00	14.95	1000
8	E2001W00-8P-HF	14.00	18.00	16.95	1000
9	E2001W00-9P-HF	16.00	20.00	18.95	1000
10	E2001W00-10P-HF	18.00	22.00	20.95	1000
11	E2001W00-11P-HF	20.00	24.00	22.95	1000
12	E2001W00-12P-HF	22.00	26.00	24.95	1000
13	E2001W00-13P-HF	24.00	28.00	26.95	1000
14	E2001W00-14P-HF	26.00	30.00	28.95	1000
15	E2001W00-15P-HF	28.00	32.00	30.95	1000
16	E2001W00-16P-HF	30.00	34.00	32.95	1000

	GENERAL TOLERANCE		UNIT: mm		DATE		TITLE: PH2.0mm DIP 180° Wafer			
	.X±0.30	X°±1°	DRAWN:	朱佑武	2014.05.19					
	.XX±0.20	.X°±	CHECKED:	张自豪	2014.05.19					
	.XXX±0.10	.XX°±	APPROVED:	张自豪	2014.05.19					
LTR	NAME	DATE	VERISION RECORD							

东莞市宏蓝电子有限公司

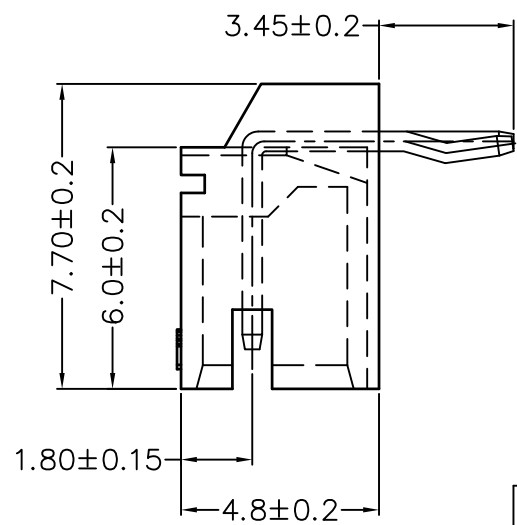
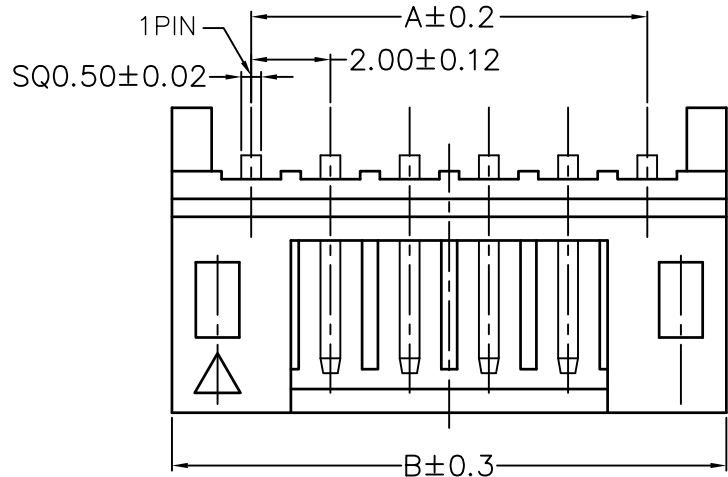
PROJECTION PART NO. E2001W00-NP-HF

VER. SCALE: N/A SHEET: 1/1

DRAWING NO. E2001W00

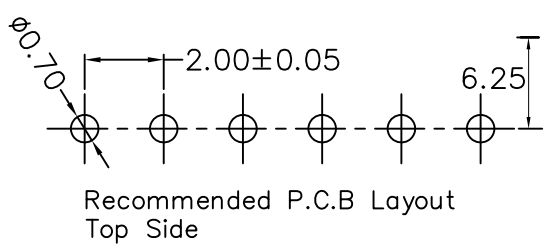
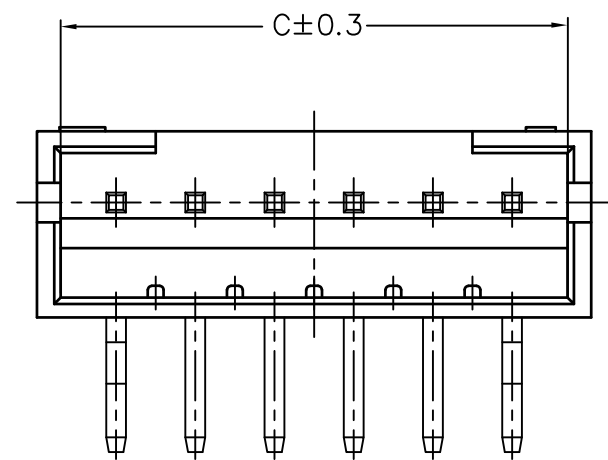
由 Autodesk 教育版产品制作

由 Autodesk 教育版产品制作



**SPECIFICATIONS**

- 1) MATERIAL:  
HOUSING: PA66 UL94V0  
TERMINAL: BRASS, TIN PLATING
- 3) Current rating: 2A AC,DC.
- 2) VOLTAGE RATING: 250V AC/DC
- 4) CONTACT RESISTANCE: 20mΩ MAX
- 5) INSULATION RESISTANCE: 1,000M OHMS MIN.
- 6) TEMPERATURE RANGE: -25°~+85°.



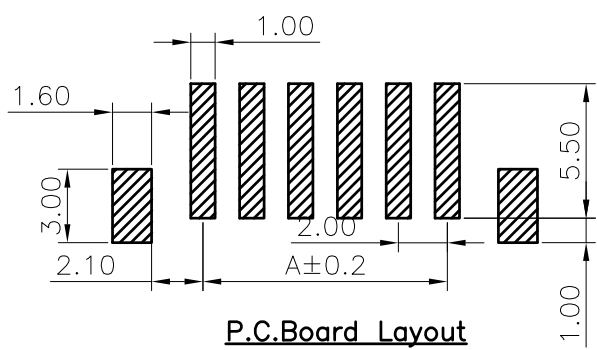
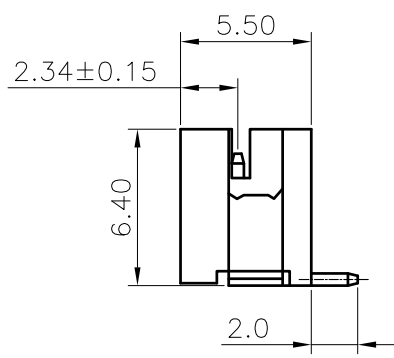
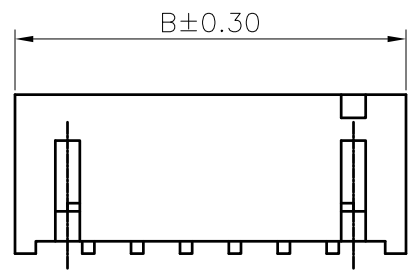
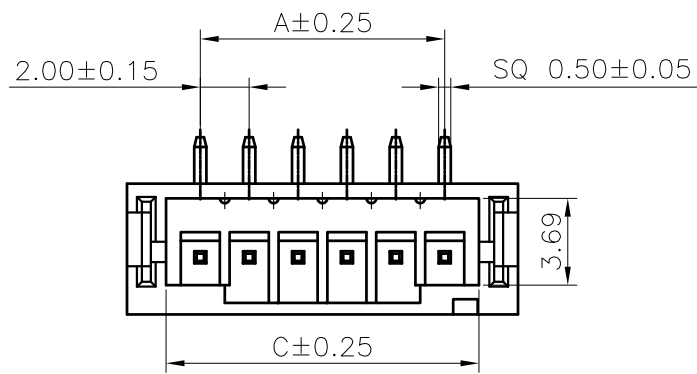
Poles	Part No.	Dimensions			Pcs/Bag
		A	B	C	
2	E2001W90-2P-HF	2.00	6.00	4.95	1000
3	E2001W90-3P-HF	4.00	8.00	6.95	1000
4	E2001W90-4P-HF	6.00	10.00	8.95	1000
5	E2001W90-5P-HF	8.00	12.00	10.95	1000
6	E2001W90-6P-HF	10.00	14.00	12.95	1000
7	E2001W90-7P-HF	12.00	16.00	14.95	1000
8	E2001W90-8P-HF	14.00	18.00	16.95	1000
9	E2001W90-9P-HF	16.00	20.00	18.95	1000
10	E2001W90-10P-HF	18.00	22.00	20.95	1000
11	E2001W90-11P-HF	20.00	24.00	22.95	1000
12	E2001W90-12P-HF	22.00	26.00	24.95	1000
13	E2001W90-13P-HF	24.00	28.00	26.95	1000
14	E2001W90-14P-HF	26.00	30.00	28.95	1000
15	E2001W90-15P-HF	28.00	32.00	30.95	1000
16	E2001W90-16P-HF	30.00	34.00	32.95	1000

4				
3				
2				
1				
LT	ECN NO.	NAME	DATE	VERSION RECORD
1				
2				
3				

GENERAL TOLERANCE		UNIT: mm	DATE
.X±0.25	X°±	DRAWN: 张彬	
.XX±0.15	.X°±	CHECKED:	
.XXX±0.08	.XX°±	APPROVED:	

TITLE:		
PH2.0 Wafer 插件卧式		
VER.	SCALE:	1:1
A0	SHEET:	1/1

东莞市宏欣蓝电子有限公司		
PROJECT	PART NO.	E2001W90-NP-HF
DRAWING NO.		E2001W90-NP



P.C.Board Layout

Ordering code:

E12001W00-NP-S X X X XX  
①②③④

- ① N=Halogen Free R=RoHS
- ② Material: 9=Nylon 9T L=LCP
- ③ Color: B=Black E=Beige
- ④ Plating code: T1=Tin plated  
G1=Gold-flash

◆ SPECIFICATIONS

- Current rating: 2A AC, DC
- Voltage rating: 100V AC, DC
- Temperature range: -25°C ~ +85°C
- Insulation resistance: 1000MΩ Min.
- Withstanding voltage: 800V AC/ minute.
- Contact resistance: 20mΩ Max.

Material:

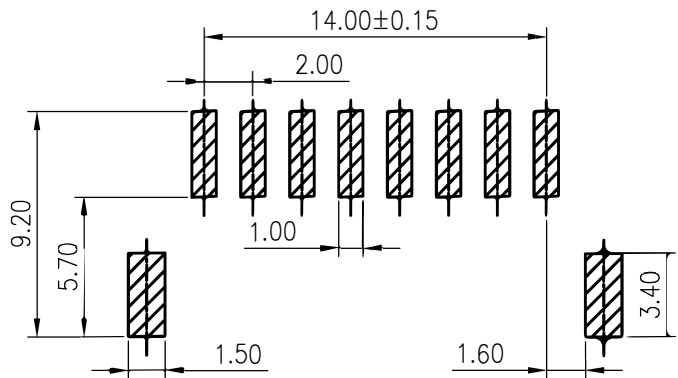
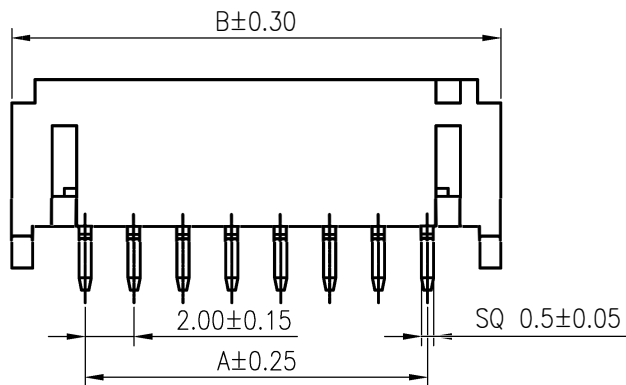
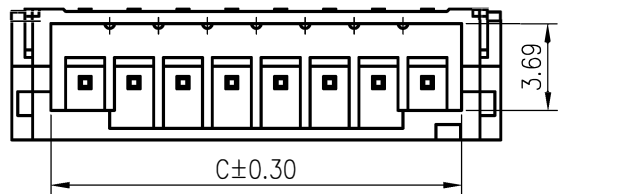
- Insulator: Nylon 9T UL 94V-0
- Contact: Brass
- Solder Nail: Brass
- Plating: Tin plated over Nickel
- Circuits: 2~16
- Mate: E12001 series Housing

PIN No.	Dimension		
	A	B	C
2	2.00	8.00	4.80
3	4.00	10.00	6.80
4	6.00	12.00	8.80
5	8.00	14.00	10.80
6	10.00	16.00	12.80
7	12.00	18.00	14.80
8	14.00	20.00	16.80
9	16.00	22.00	18.80
10	18.00	24.00	20.80
11	20.00	26.00	22.80
12	22.00	28.00	24.80
13	24.00	30.00	26.80
14	26.00	32.00	28.80
15	28.00	34.00	30.80
16	30.00	36.00	32.80

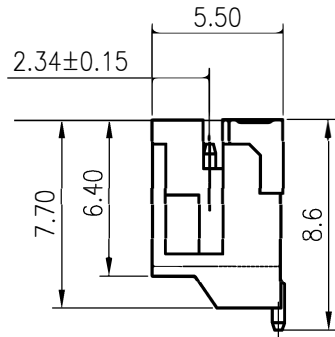
△				GENERAL TOLERANCE		UNIT: mm		DATE		TITLE:		
△				.X±0.30	X°±1°	DRAWN: 朱佑武		2012.10.18		JST PH 2.0 SMT 180° Wafer		
△				.XX±0.20	.X°±	CHECKED: 张自豪		2012.10.18		VER. SCALE: N/A		
△				.XXX±0.10	.XX°±	APPROVED: 张自豪		2012.10.18		A SHEET: 1/1		
LTR	NAME	DATE	VERISION RECORD									

**东莞市宏欣蓝电子有限公司**

PROJECTION	PART NO.	E2001W00-NP-SR9ET1	
DRAWING NO.		E2001W00-S	



P.C.Board Layout



◆ SPECIFICATIONS

- Current rating: 2A AC, DC
- Voltage rating: 100V AC, DC
- Temperature range: -25°C ~ +85°C
- Insulation resistance: 1000MΩ Min.
- Withstanding voltage: 800V AC/ minute.
- Contact resistance: 20mΩ Max.

Material:

Insulator: Nylon 9T UL 94V-0  
 Contact: Brass  
 Solder Nail: Brass  
 Plating: Tin plated over Nickel  
 Circuits: 2~16

Ordering code:

E2001W90-NP-SX X X XX  
 ①②③④

- ① N=Halogen Free R=RoHS
- ② Material: 9=PA9T L=LCP
- ③ Color: B=Black E=Beige
- ④ Plating code: T1=Tin plated  
G1=Gold-flash

PIN No	Dimension		
	A	B	C
2	2.00	8.00	4.80
3	4.00	10.00	6.80
4	6.00	12.00	8.80
5	8.00	14.00	10.80
6	10.00	16.00	12.80
7	12.00	18.00	14.80
8	14.00	20.00	16.80
9	16.00	22.00	18.80
10	18.00	24.00	20.80
11	20.00	26.00	22.80
12	22.00	28.00	24.80
13	24.00	30.00	26.80
14	26.00	32.00	28.80
15	28.00	34.00	30.80
16	30.00	36.00	32.80

④				GENERAL TOLERANCE	UNIT: mm	DATE	TITLE:
③				.X ± 0.30	X° ± 1°	DRAWN: 朱佑武 2012.10.18	JST PH 2.0 SMT 90° Wafer
②				.XX ± 0.20	.X° ±	CHECKED: 张自豪 2012.10.18	VER. SCALE: N/A
①				.XXX ± 0.10	.XX° ±	APPROVED: 张自豪 2012.10.18	A SHEET: 1/1
LTR	NAME	DATE	VERSION RECORD				

东莞市宏欣蓝电子有限公司

PROJECT ION PART NO. | E2001W90-NP-SXXXXX

DRAWING NO. | E2001W90-S