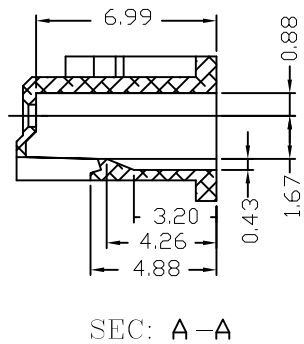
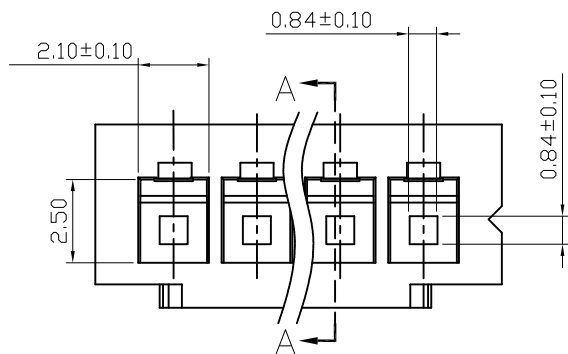
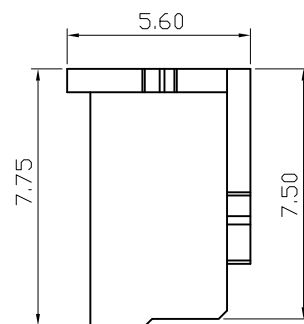
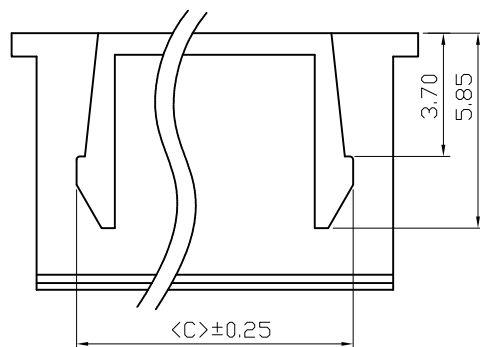
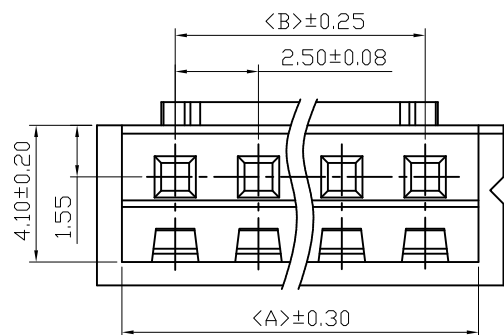


Specifications:

Rated Voltage : 250V AC/DC
 Rated Current : 2.5A AC,DC
 Withstand Voltage : 800V AC/minute
 Contact Resistance : 20mΩ(MAX.)
 Insulation Resistance : 1000MΩ(MIN.)
 Temperature Range : -25°C~+85°C
 Suitable E2501 Series Terminal



E2501H00-NPX-HF-NK

- ① ② ③④⑤ ⑥

- ① Series No.
- ② H90 : Side Contact
H00 : Up Contact
- ③ No. of Circuits
- ④ X : Product color(A--Y)
Blank: Natural type
- ⑤ HF : Halogen Free
- ⑥ NK: No Mark
Blank: Mark

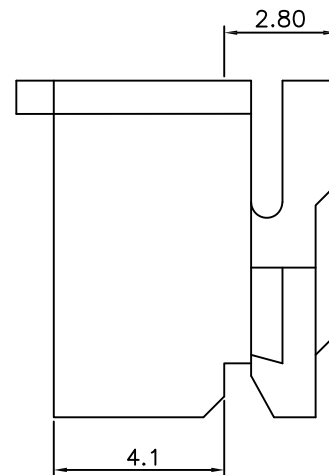
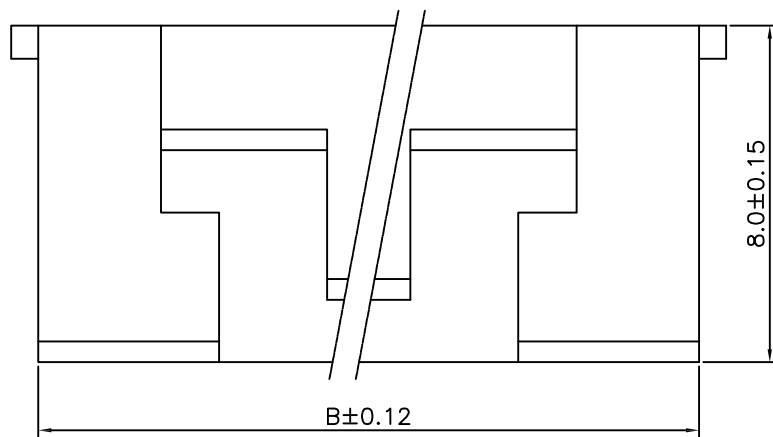
PART NO.	DIMENSIONS		
	A	B	C
2P	5.7	2.5	3.3
3P	8.2	5.0	5.8
4P	10.7	7.5	8.3
5P	13.2	10.0	10.8
6P	15.7	12.5	13.3
7P	18.2	15.0	15.8
8P	20.7	17.5	18.3
9P	23.2	20.0	20.8
10P	25.7	22.5	23.3
11P	28.2	25.0	25.8
12P	30.7	27.5	28.3
13P	33.2	30.0	30.8
14P	35.7	32.5	33.3
15P	38.2	35.0	35.8
16P	40.7	37.5	38.3

△				GENERAL TOLERANCE	UNIT: mm	DATE	TITLE:			
③				.X±0.20	X°±1°	DRAWN: 张自豪	2010.06.20	XH 2.50 Housing		
△				.XX±0.10	.X°±	CHECKED:		VER.	SCALE:	N/A
△				.XXX±0.05	.XX°±	APPROVED: 张彬彬	2010.06.20	A	SHEET:	1/1
LTR	NAME	DATE	VERSION RECORD							

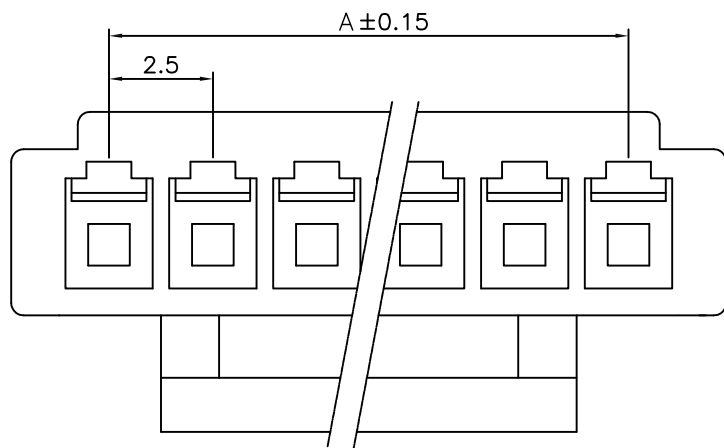
东莞市宏欣蓝电子有限公司

PROJECTION	PART NO.	E2501H00-NPX-HF-NK	
DRAWING NO.	E2501H		





Specifications:
 Rated Voltage : 250V AC/DC
 Rated Current : 2.5A AC,DC
 Withstand Voltage : 800V AC/minute
 Contact Resistance : 20mΩ(MAX.)
 Insulation Resistance : 1000MΩ(MIN.)
 Temperature Range : -25°C~+85°C
 Suitable E2501 Series Terminal



E2501H00-NPX-L-HF-NK

① ② ③④⑤ ⑥ ⑦

- ① Series No.
- ② H90 : Side Contact
H00 : Up Contact
- ③ No. of Circuits
- ④ X : Product color(A--Y)
Blank: Natural type
- ⑤ L : Lock
- ⑥ HF : Halogen Free
- ⑦ NK: No Mark
Blank: Mark

PART NO.	DIMENSIONS	
	A	B
2P	2.50	5.70
3P	5.00	8.20
4P	7.50	10.70
5P	10.00	13.20
6P	12.50	15.70
7P	15.00	18.20
8P	17.50	20.70
9P	20.00	23.20
10P	22.50	25.70
11P	25.00	28.20
12P	27.50	30.70
13P	30.00	33.20
14P	32.50	35.70
15P	35.00	38.20
16P	37.50	40.70

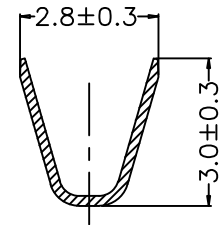
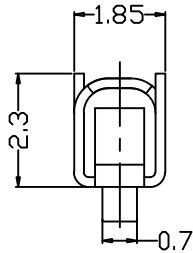
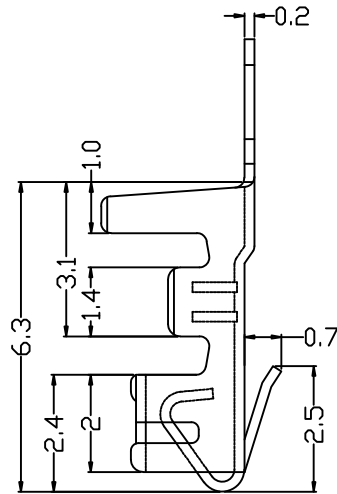
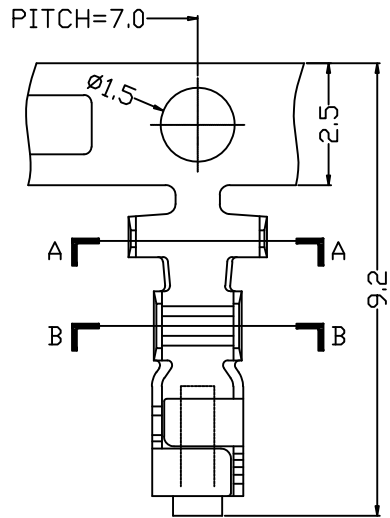
④				GENERAL TOLERANCE	UNIT: mm	DATE	TITLE:	
③				.X ± 0.20	X° ± 1°	DRAWN: 张自豪	2010.06.20	XH 2.50 带扣 Housing
②				.XX ± 0.10	.X° ±	CHECKED:		
①				.XXX ± 0.05	.XX° ±	APPROVED: 张彬彬	2010.06.20	VER. A
LTR	NAME	DATE	VERSION RECORD					SCALE: N/A
1	2	3	4	5	6	7	8	SHEET: 1/1

东莞市宏欣蓝电子有限公司

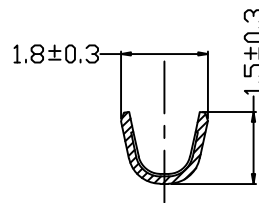
PROJECTION PART NO. E2501H00-NPX-L-HF-XX

DRAWING NO. E2501H-L





SECTION A-A



SECTION B-B

Specifications:

Rated Voltage : 250V AC/DC
 Rated Current : 2.5A AC,DC
 Withstand Voltage : 800V AC/minute
 Contact Resistance : 20mΩ(MAX.)
 Insulation Resistance : 1000MΩ(MIN.)
 Temperature Range : -25°C~+85°C
 Suitable E2501 Series Housing

E2501 I 0 P-XX-XX
 ① ②③④ ⑤ ⑥

- ① Series No.
- ② T: Terminal
- ③ 9 : Side Contact
- 0 : Up Contact
- ④ P : Phosphor Bronze
- ⑤ 2E : Tin-plated
- ⑥ NK : No Mark
- Blank : Mark

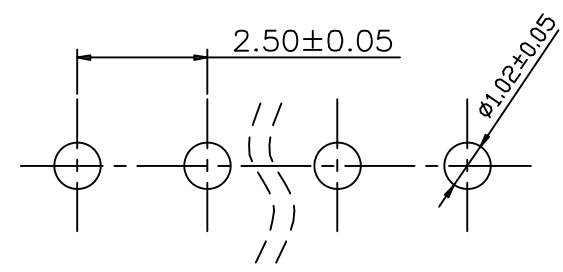
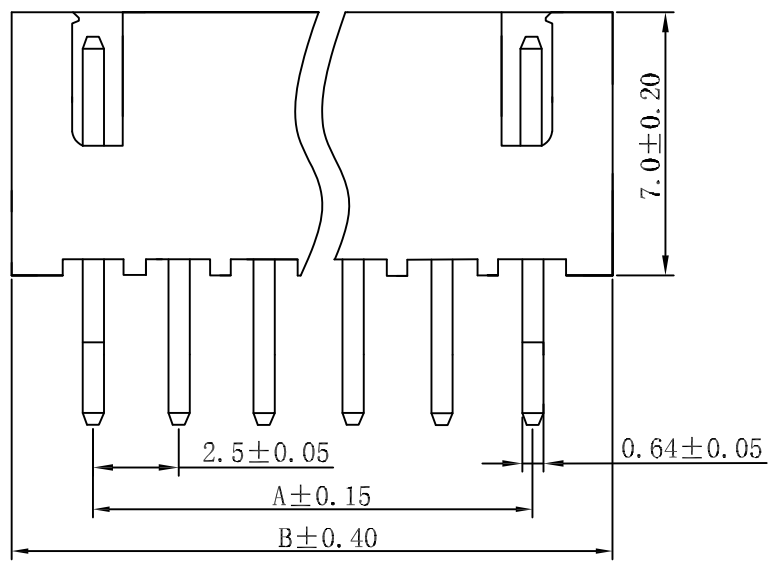
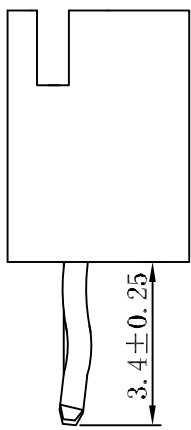
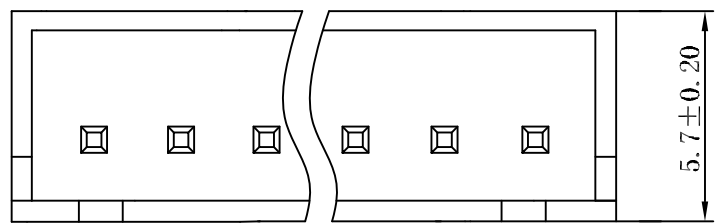
Specifications & Ordering Information:

Part No.	Material	Wire Range	Finish	Qty/Reel
E2501TOP-2-NK	Phosphor Bronze	AWG #22-30	Tin-plated先镀后冲	10000PCS
E2501TOP-2E-NK	Phosphor Bronze	AWG #22~30	Tin-plated先冲后镀	10000PCS

④				GENERAL TOLERANCE		UNIT: mm		DATE		TITLE: XH2.50 Terminal VER. SCALE: N/A A1 SHEET: 1/1 PROJECT PART NO. E2501TOP-XX-XX DRAWING NO. E2501T			
③				.X ± 0.25	X° ± 1°	DRAWN: 张自豪	2010.06.13	东莞市宏欣蓝电子有限公司					
②				.XX ± 0.13	.X° ±	CHECKED:							
①				.XXX ± 0.08	.XX° ±	APPROVED: 张彬彬	2010.6.13						
LTR	NAME	DATE	VERSION RECORD										

SPECIFICATIONS

- 1) MATERIAL:
HOUSING:PA66 UL94V0
TERMINAL:BRASS,TIN PLATING
- 3) Current rating:3A AC,DC.
- 2) VOLTAGE RATING:250V AC/DC
- 4) CONTACT RESISTANCE:20mΩ MAX
- 5) INSULATION RESISTANCE:1,000M OHMS MIN.
- 6) TEMPERATURE RANGE:-25°~+85°.



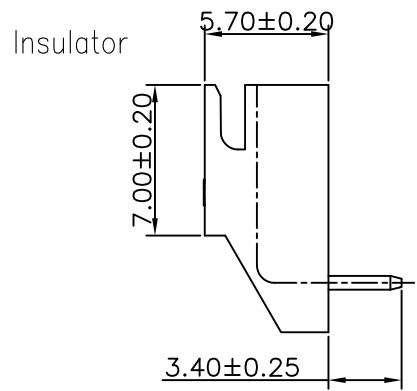
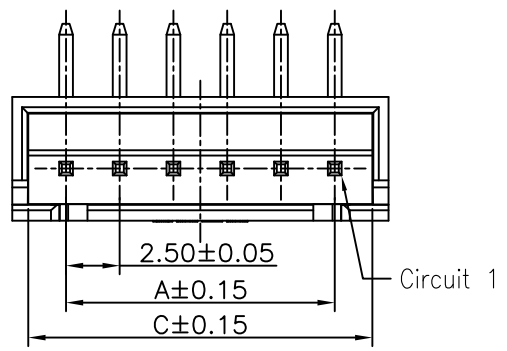
Recommended P.C.B Layout(Top Side)

Circuits	Dimensions	
	A	B
2P	--	7.50
3P	5.00	10.00
4P	7.50	12.50
5P	10.00	15.00
6P	12.50	17.50
7P	15.00	20.00
8P	17.50	22.50
9P	20.00	25.00
10P	22.50	27.50
11P	25.00	30.00
12P	27.50	32.50
13P	30.00	35.00
14P	32.50	37.50
15P	35.00	40.00
16P	37.50	42.50

④				GENERAL TOLERANCE	UNIT: mm	DATE	TITLE:	
③				.X ± 0.30	X° ± 1°	DRAWN: 朱佑武	2014.05.19	XH2.50mm DIP 180° Wafer
②				.XX ± 0.20	.X° ±	CHECKED: 张自豪	2014.05.19	
①				.XXX ± 0.10	.XX° ±	APPROVED: 张自豪	2014.05.19	
LTR	NAME	DATE	VERSION RECORD					

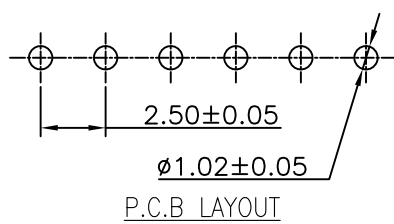
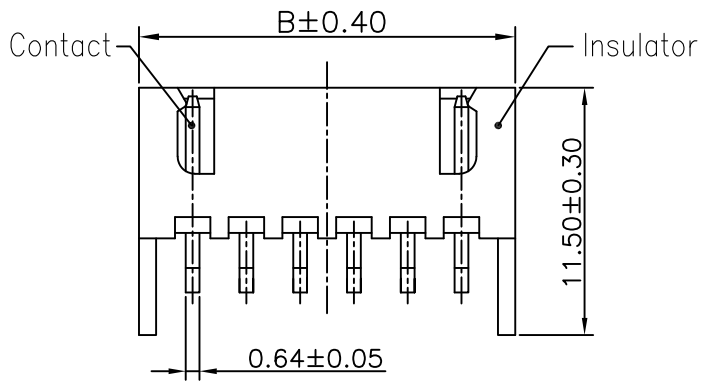
东莞市宏欣蓝电子有限公司

PROJECTION	PART NO.	E2501W00-NP-HF-NK
DRAWING NO.	E2501W00	



SPECIFICATIONS

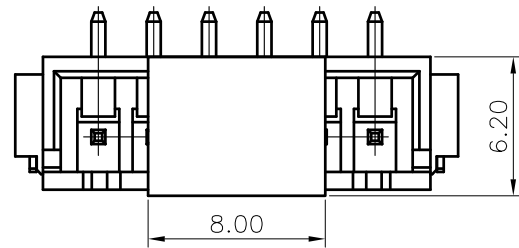
- 1) MATERIAL:
HOUSING:PA66 UL94V0
TERMINAL:BRASS,TIN PLATING
- 2) VOLTAGE RATING:250V AC/DC
- 3) Current rating:3A AC,DC.
- 4) CONTACT RESISTANCE:20mΩ MAX
- 5) INSULATION RESISTANCE:1,000M OHMS MIN.
- 6) TEMPERATURE RANGE:-25°~+85°.



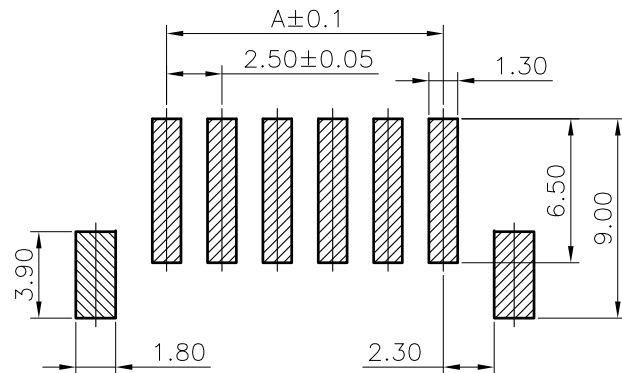
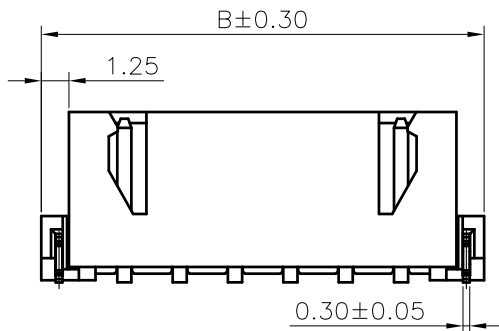
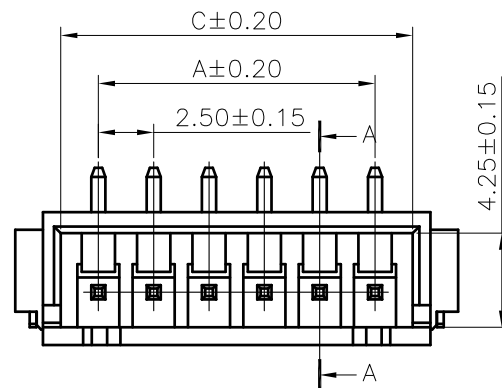
Circuits	Dimensions		
	A	B	C
2P	--	7.50	6.00
3P	5.00	10.00	8.50
4P	7.50	12.50	11.00
5P	10.00	15.00	13.50
6P	12.50	17.50	16.00
7P	15.00	20.00	18.50
8P	17.50	22.50	21.00
9P	20.00	25.00	23.50
10P	22.50	27.50	26.00
11P	25.00	30.00	28.50
12P	27.50	32.50	31.00
13P	30.00	35.00	33.50

	GENERAL TOLERANCE		UNIT: mm		DATE		TITLE: XH2.50mm DIP 90° Wafer		
	.X±0.30	X°±1°	DRAWN: 朱佑武		2014.05.19				
	.XX±0.20	.X°±	CHECKED: 张自豪		2014.05.19		VER.	SCALE:	N/A
	.XXX±0.10	.XX°±	APPROVED: 张自豪		2014.05.19		A	SHEET:	1/1
LTR	NAME	DATE	VERISION RECORD						

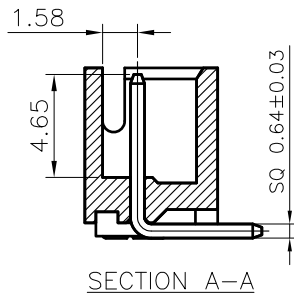
东莞市宏欣蓝电子有限公司		
PROJECTION	PART NO.	E2501W90-NP-HF
DRAWING NO.		E2501W90



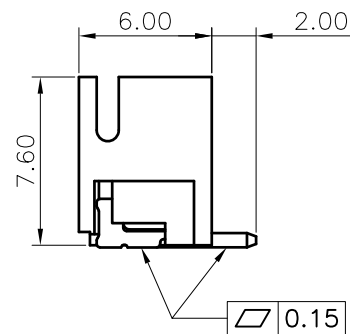
WITH COVER



Recommended P.C.Board Layout



SECTION A-A



◆SPECIFICATIONS

- Current rating: 3A AC, DC
- Voltage rating: 250V AC,DC
- Temperature range: -25°C ~ +85°C
- Insulation resistance: 1000MΩ Min.
- Withstanding voltage: 1000V AC/ minute.
- Contact resistance: 20mΩ Max.

Material:

- Insulator: Nylon 9T UL 94V-0
- Contact: Brass
- Solder Nail: Brass
- Plating: Tin plated over Nickel
- Circuits: 2~16
- Mates: E2501 series Housing

Ordering code:

E2501W00-NP-S X X X XX
①②③④

- ① N=Halogen Free R=RoHS
- ② Material: 9=Nylon 9T L=LCP
- ③ Color: B=Black E=Beige
- ④ Plating code: T1=Tin plated
G1=Gold-flash

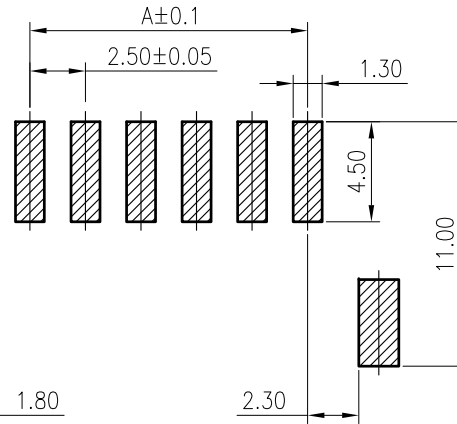
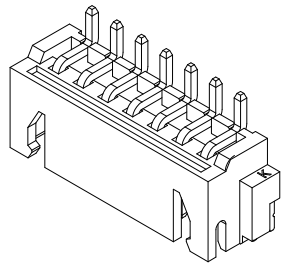
CKT.	Dimension		
	A	B	C
02	2.50	10.00	5.90
03	5.00	12.50	8.40
04	7.50	15.00	10.90
05	10.00	17.50	13.40
06	12.50	20.00	15.90
07	15.00	22.50	18.40
08	17.50	25.00	20.90
09	20.00	27.50	23.40
10	22.50	30.00	25.90
11	25.00	32.50	28.40
12	27.50	35.00	30.90
13	30.00	37.50	33.40
14	32.50	40.00	35.90
15	35.00	42.50	38.40
16	37.50	45.00	40.90

△				GENERAL TOLERANCE	UNIT: mm	DATE	TITLE:		
△				.X±0.25	X°±1°	DRAWN: 朱佑武	JST XH2.5 SMT		
△				.XX±0.15	.X°±	CHECKED: 张自豪	180度 Wafer		
△				.XXX±0.10	.XX°±	APPROVED: 张自豪	VER. A	SCALE:	N/A
1	NAME	DATE	VERSION RECORD				SHEET:	1/1	

东莞市宏欣蓝电子有限公司

PROJECT PART NO. E2501W00-NP-SXXXXX

DRAWING NO. E2501W00-S



◆ SPECIFICATIONS

- Current rating: 3A AC, DC
- Voltage rating: 250V AC, DC
- Temperature range: -25°C ~ +85°C
- Insulation resistance: 1000MΩ Min.
- Withstanding voltage: 1000V AC/ minute.
- Contact resistance: 20mΩ Max.

Material:

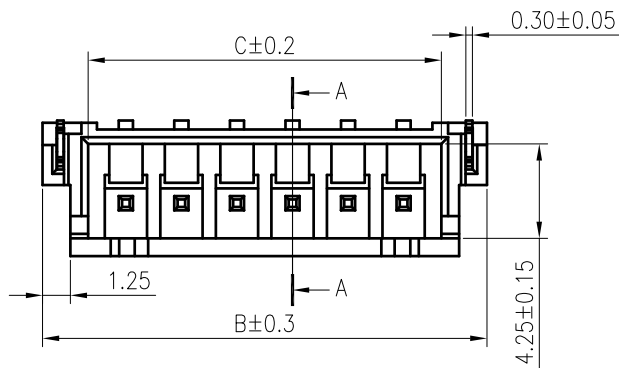
Insulator: Nylon 9T UL 94V-0

Contact: Brass

Solder Nail: Brass

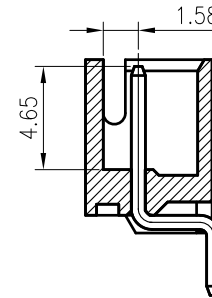
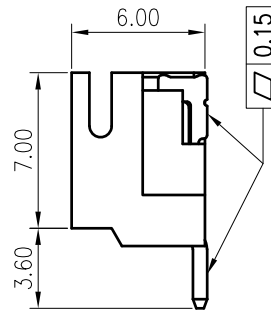
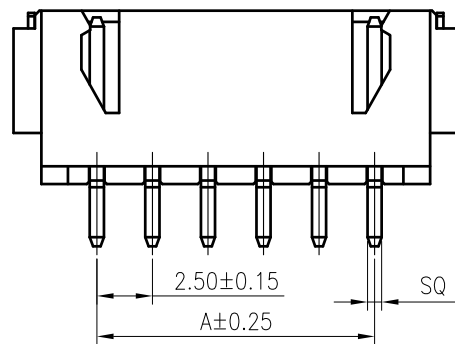
Plating: Tin plated over Nickel

Circuits: 2~16



Recommended P.C.Board Layout

CKT.	Dimension		
	A	B	C
02	2.50	10.00	5.90
03	5.00	12.50	8.40
04	7.50	15.00	10.90
05	10.00	17.50	13.40
06	12.50	20.00	15.90
07	15.00	22.50	18.40
08	17.50	25.00	20.90
09	20.00	27.50	23.40
10	22.50	30.00	25.90
11	25.00	32.50	28.40
12	27.50	35.00	30.90
13	30.00	37.50	33.40
14	32.50	40.00	35.90
15	35.00	42.50	38.40
16	37.50	45.00	40.90



SECTION A-A

F	④			GENERAL TOLERANCE	UNIT: mm	DATE	TITLE: JST XH2.5 SMT 90° WAFER			东莞市宏欣蓝电子有限公司		
	③			.X ± 0.3	X° ± 1°	DRAWN: 朱佑武 2013.12.29						
	②			.XX ± 0.2	.X° ±	CHECKED: 张自豪 2013.12.29	PROJECTION	PART NO.	E2501W90-NP-SR9ET1			
	①			.XXX ± 0.1	.XX° ±	APPROVED: 张自豪 2013.12.29	VER. A	SCALE: 1/1	N/A	DRAWING NO.	E2501W90-NP-S	
	LTR	NAME	DATE	VERSION RECORD								
	1	2	3	4	5	6	7	8	9			